



**PUBLIC SUMMARY REPORT**

**TRACEABILITY TO PLANTATION ASSESSMENT**

**Name of Parent Company:** LKPP Corporation Sendirian Berhad

**Name of Palm Oil Mill:** Kilang Sawit LCSB Lepar

**Mill MPOB License No.:** 5002233040000

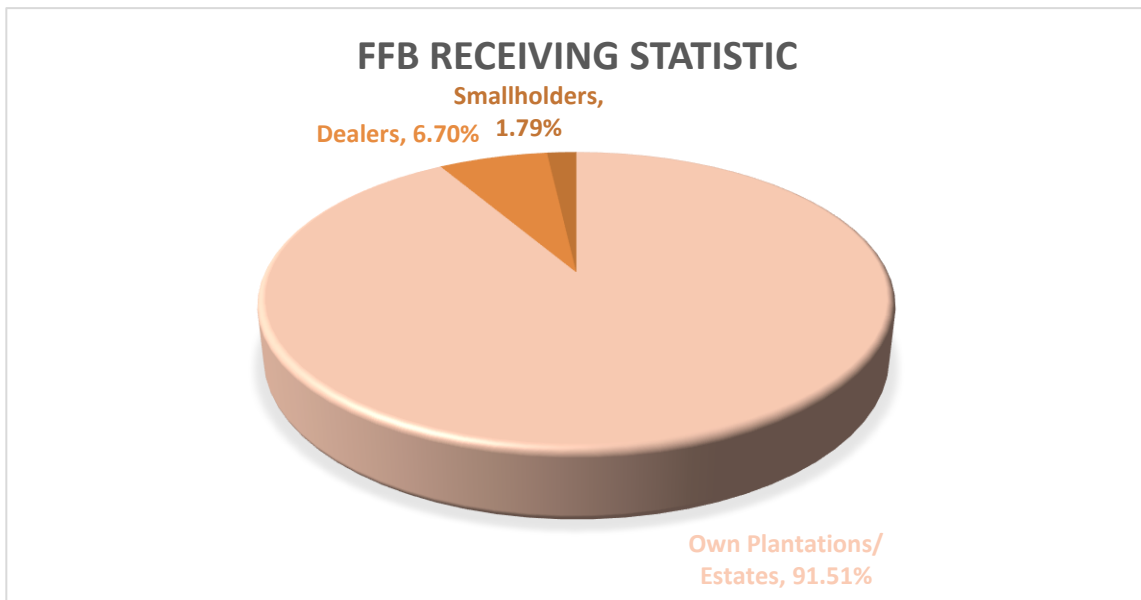
**Mill Address:** Km 43.5 Leburaya Tun Razak, 263000 Gambang

**GPS Coordinate of Palm Oil Mill:** 3.592751, 103.082382

**Supplied Mewah’s Refineries:** Ngo Chew Hong Oils & Fats (M) Sdn Bhd (Semenyih)

**Assessment Date:** 27<sup>th</sup> September 2023 (Wednesday)

**A. Fresh Fruit Bunch (FFB) Traceability:**



FFB Sources	TTP Score	Overall TTP Score %
Own Plantations/ Estates	100%	<b>100%</b>
3 <sup>rd</sup> Party Plantations/ Estates	NA	
Dealers	100%	
Smallholders	100%	

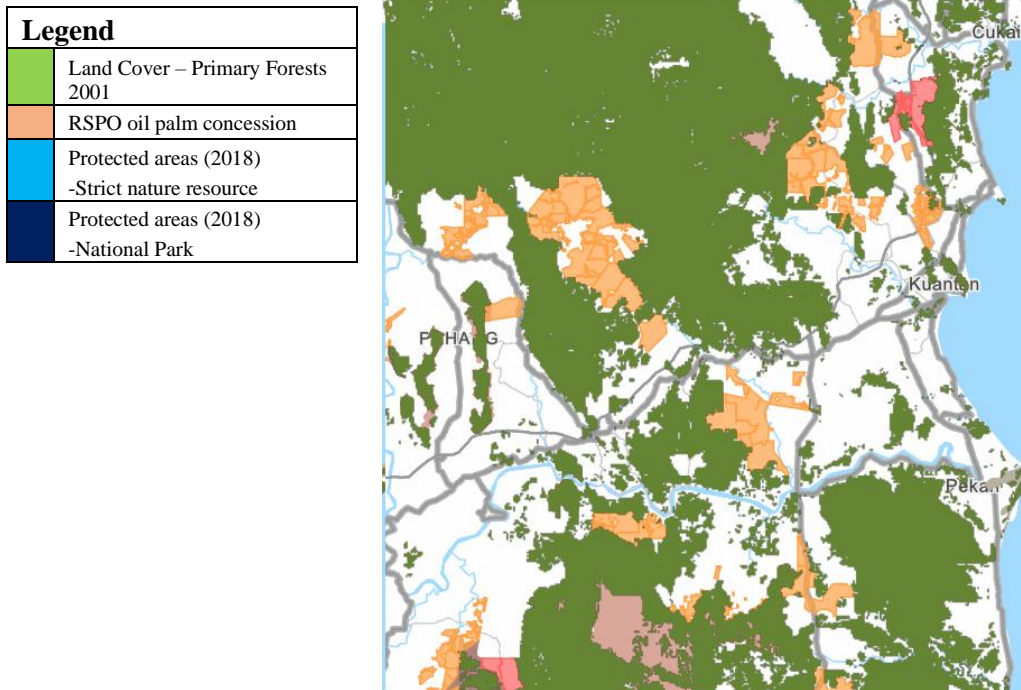
## B. Environmental Risk Analysis

Assessment Date: 28<sup>th</sup> September 2023

1. Environmental risk assessment is carried out within the theoretical FFB catchment area (50km radius) in Kilang Sawit LCSB Lepar.
2. The overall environmental risk ranking of Kilang Sawit LCSB Lepar is summarized as follows.

Summary	Mill Priority (Threat + Value)	Threat (Overall)				Value (Overall)		
	High	High				Low		
<b>Forest change</b>	<i>Change years displayed in the graphs above and start and end dates for total loss calculations in the tables at right.</i>						LOSS, ALL YEARS (HA)	TREE COVER EXTENT 2000 (HA)
	Tree Cover Loss	47.83%					297,435	621,872
	Primary Forest	34.19%					100,810	294,863
	Protected Areas	46.85%					23,078	49,256
	Peat	0.00%					0	0
	Intact Forest Landscape	0.00%					0	0
<b>Commodity Risk</b>	THREATS				VALUES			
	Deforestation	Peat	Protected Areas	Fires	Forest	Peat	Protected Areas	
	Amount	8,137 ha	0 ha	18,340 ha	87 /yr	185,658 ha	0 ha	50,700 ha
Risk Level	High	Low	High	High	Medium	Low	Medium	
<b>Mill Priority Threat Value</b>	LCSB LEPAR	High	High	Low	MILL PRIORITY HISTORY THREAT + VALUE ⓘ			
	Mill Name	Mill Priority Threat + Value	Threat Overall	Value Overall				

The following mapping is used as an indicator to indicate the potential environmental risks of the assessed palm oil mill.



### C. Social Impact Assessment

1. Social Impact Assessment is carried out as well during the mill assessment.
2. The representatives from the mill were made to understand the important pillars of good social responsibility practices, mandatory compliance of national labour laws & human rights, and the need to improve social engagement with the local community.
3. The findings of the social impact assessment are outlines in the following table:

No.	Social Impact Assessment Criteria	Conclusion
1.	Compliance of National laws & Regulations	<b>Yes</b>
2.	Availability of Labour Policy	<b>Yes</b>
3.	Implementing Measures to Ensure the Elimination of Child and Forced Labor	<b>Yes</b>
4.	Availability of clearly written and understandable worker's contract for foreign guest workers	<b>Yes</b>
5.	Freedom of Association	<b>Yes</b>
6.	No exploitation of human rights of workers and local communities	<b>Yes</b>
7.	Safe & Healthy Working Environment	<b>Yes</b>
8.	Compliance with worker's minimum standard of Housing & Amenities Act 1990	<b>Yes</b>
9.	Availability of Complaint Platform & Grievance Mechanism	<b>Yes</b>
10.	CSR/Community Contribution	<b>Yes</b>
11.	Fair Pricing	<b>Yes</b>

*Disclaimers:*

*The traceability to plantation assessment is carried out through observation, documentation reviews and interview based on Mewah's Sustainable Palm Oil Policy and Mewah's Supplier Assessment Guidelines. The above findings are collected through multiple sampling methodologies during the assessment date. The information contained in this report may contain confidential, proprietary, privileged and/or private information. It is only intended for the users of Mewah Group Sustainability Dashboard.*