



PUBLIC SUMMARY REPORT

TRACEABILITY TO PLANTATION ASSESSMENT

Name of Parent Company: Kim Loong Resources Bhd.

Name of Palm Oil Mill: Kim Loong Sabah Mills Sdn. Bhd.

Mill MPOB License No.: 5275 9310 4000

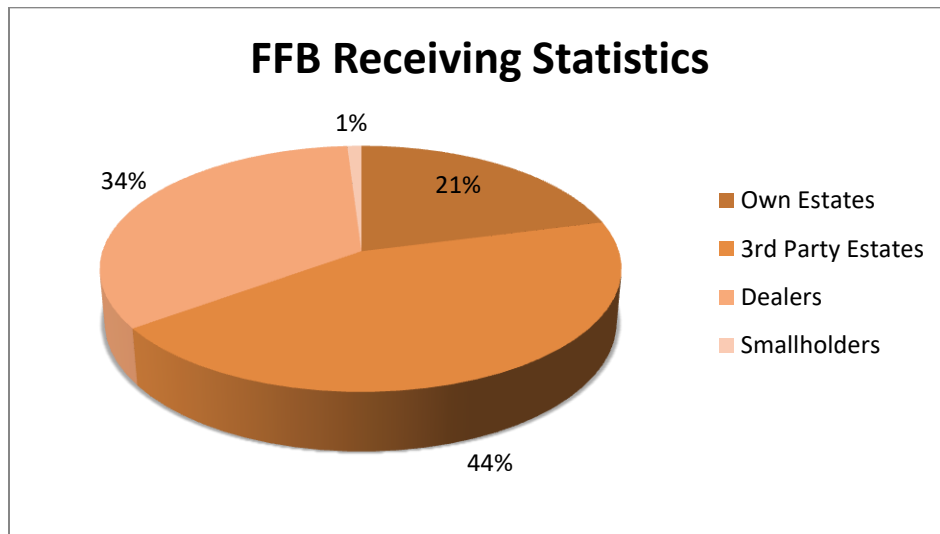
Mill Address: Km 27, Off Jalan Tongod Telupid, No.A042, Pekan Telupid, Peti Surat No.27, 89300 Telupid, Sabah

GPS Coordinate of Palm Oil Mill: 5.4680673, 116.987350

Supplied Mewah’s Refineries: Mewah Datu Sdn. Bhd. (Lahad Datu)

Assessment Date: 6th September 2018 (Wednesday)

A. Fresh Fruit Bunch (FFB) Traceability:



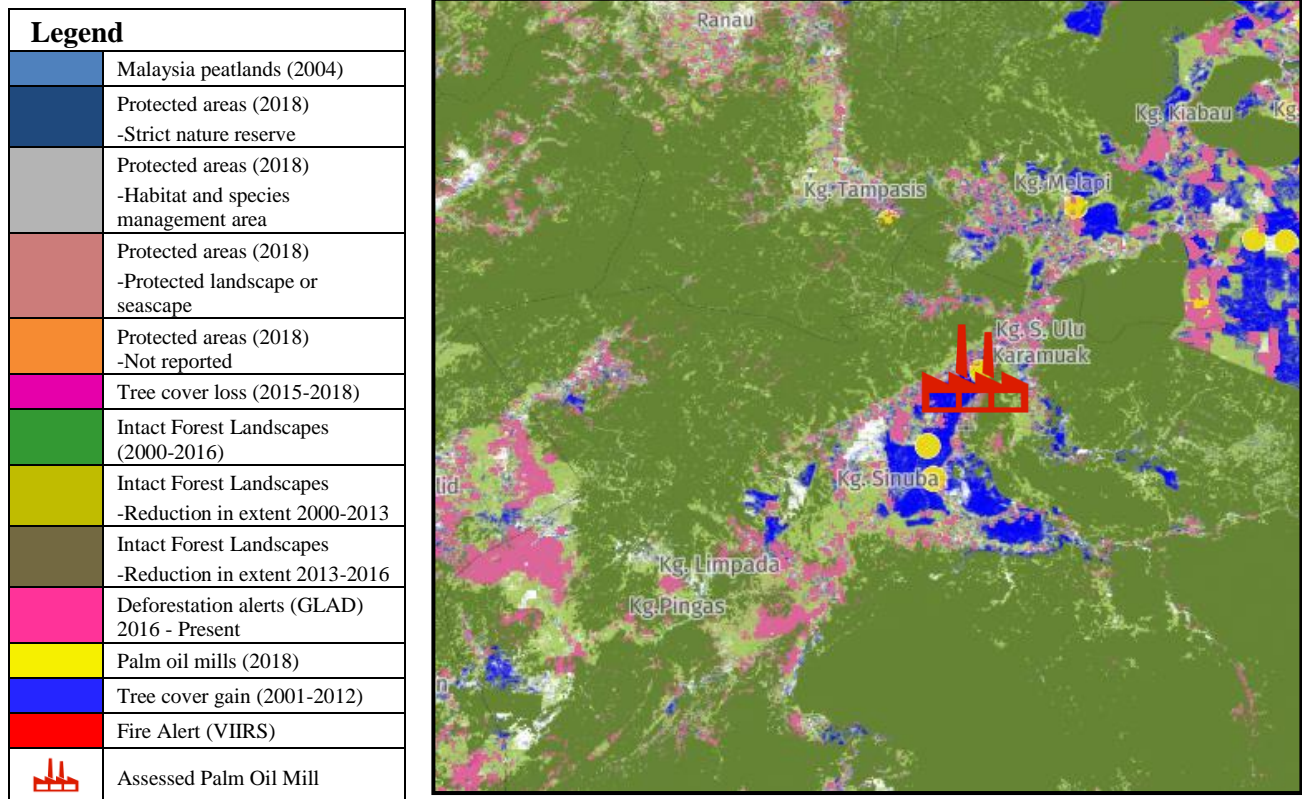
FFB Sources	Traceability Score	Overall TTP Score %
Own Plantations/ Estates	50%	58.12%
3 rd Party Plantations/ Estates	47%	
Dealers	77%	
Smallholders	67%	

B. Environmental Risk Analysis

1. Environmental risk assessment is carried out within theoretical FFB catchment area (50km radius) in Kim Loong Sabah Mills Sdn. Bhd. using Global Forest Watch (GFW) tool.
2. The overall environmental risk ranking of Kim Loong Sabah Mills Sdn. Bhd. is summarized as follows.

Potential Environmental Risk Factors						
Rate of Tree Cover Loss	Tree Cover Loss on Primary Forest	Potential Future Loss in Primary Forest	Tree Cover Loss on Peat	Tree Cover Loss on Protected Area	Tree Cover Loss on Carbon Dense Area	Fire Activity
Medium	Low	Medium Low	Low	Medium	Medium	Medium

The following mapping is used as an indicator to indicate the potential environmental risks of the assessed palm oil mill.



C. Social Impact Assessment

1. We also carried out social impact assessment during the mill assessment.
2. The mill representatives were made to understand the important pillars of good social responsibility practices, mandatory compliance of national labour laws & human rights, and the needs to improve social engagement with local community.

The findings of the social impact assessment are outlines in the following table:

Respect of Workers & Local Community Right	Yes
Compliance with Safety & Health	Yes
Compliance with National Labour Laws and Regulations	Yes
Compliance with Housing & Amenities Act 1990	Yes
Respect of FPIC	Yes
CSR/Community Contribution	Yes
Availability of grievance mechanism	Yes
Fair & Equitable Trading	Yes

Disclaimers:

The traceability to plantation assessment is carried out through observation, documentation reviews and interview based on Mewah's Sustainable Palm Oil Policy and Mewah's Supplier Assessment Guidelines. The above findings are collected through multiple sampling methodologies during the assessment date. The information contained in this report may contain confidential, proprietary, privileged and/or private information. It is only intended for the users of Mewah Group Sustainability Dashboard.