

PUBLIC SUMMARY REPORT
TRACEABILITY TO PLANTATION ASSESSMENT

Name of Parent Company: Kesedar Holding Berhad

Name of Palm Oil Mill: Kesedar Perkilangan Sdn Bhd

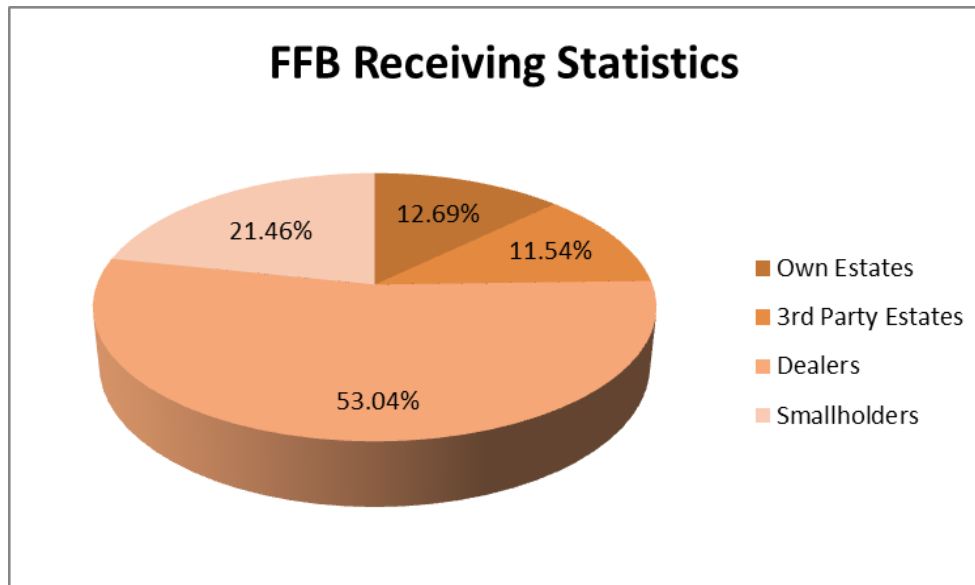
Mill MPOB License No.: 500118104000

Mill Address: Kilang Sawit KPSB Paloh 3, Rancangan Kemajuan Tanah Kesedar, Paloh 3, 18300 Gua Musang, Kelantan

GPS Coordinate of Palm Oil Mill: 4.998637, 102.275250

Supplied Mewah's Refineries: Mewah-Oils Sdn Bhd (Port Klang), & Mewaholeo Industries Sdn Bhd (Pasir Gudang)

Assessment Date: 24th Jan 2018 (Wednesday)

A. Fresh Fruit Bunch (FFB) Traceability:


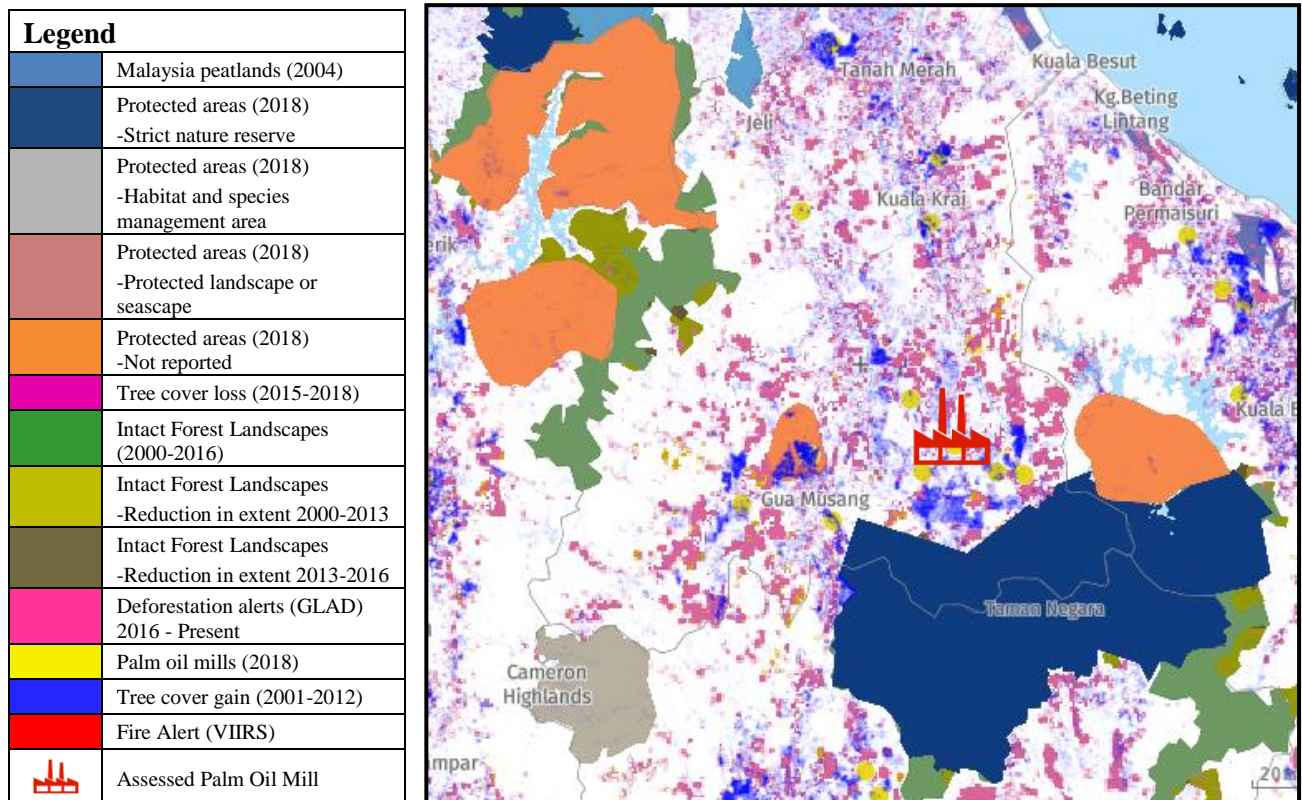
| FFB Sources | Traceability Score | Overall TTP Score % |
|--|--------------------|---------------------|
| Own Plantations/ Estates | 25% | 80% |
| 3rd Party Plantations/ Estates | 25% | |
| Dealers | 100% | |
| Smallholders | 100% | |

B. Environmental Risk Analysis

1. Environmental risk assessment is carried out within theoretical FFB catchment area (50km radius) in Kesedar Perkilangan Sdn Bhd using Global Forest Watch tool.
2. In the overall environmental risk ranking, Kesedar Perkilangan Sdn Bhd is summarized as follows.

| Potential Environmental Risk Factors | | | | | | |
|--------------------------------------|-----------------------------------|---|-------------------------|-----------------------------------|--------------------------------------|---------------|
| Rate of Tree Cover Loss | Tree Cover Loss on Primary Forest | Potential Future Loss in Primary Forest | Tree Cover Loss on Peat | Tree Cover Loss on Protected Area | Tree Cover Loss on Carbon Dense Area | Fire Activity |
| Medium high | Low | Medium | Low | Medium | Medium high | Medium low |

The following mapping is used as an indicator to indicate the potential environmental risks of the assessed palm oil mill.



C. Social Impact Assessment

1. We also carried out social impact assessment during the mill assessment.
2. The mill representatives were made to understand the important pillars of good social responsibility practices, mandatory compliance of national labour laws & human rights, and the needs to improve social engagement with local community.

The findings of the social impact assessment are outlines in the following table:

| | |
|---|-----|
| Respect of Workers & Local Community Right | Yes |
| Compliance with Safety & Health | Yes |
| Compliance with National Labour Laws and Regulations | Yes |
| Compliance with Housing & Amenities Act 1990 | Yes |
| Respect of FPIC | Yes |
| CSR/Community Contribution | Yes |
| Availability of grievance mechanism | Yes |
| Fair & Equitable Trading | Yes |

Disclaimers:

The traceability to plantation assessment is carried out through observation, documentation reviews and interview based on Mewah's Sustainable Palm Oil Policy and Mewah's Supplier Assessment Guidelines. The above findings are collected through multiple sampling methodologies during the assessment date. The information contained in this report may contain confidential, proprietary, privileged and/or private information. It is only intended for the users of Mewah Group Sustainability Dashboard.